

Hanky Panky



NORTH COTT
MONARCH

Blossoms & Butterflies
quilt by Patti Carey - collection by Ro Gregg

Blossoms & Butterflies

designed by Patti Carey using Northcott's Hanky Panky collection by Ro Gregg

In this 30's inspired lap quilt, the butterfly appliqués are actually made from a handkerchief print.

Finished Size: 48" x 57" Number of Blocks and Finished Size: 10 Dresden Plate blocks & 10 butterfly blocks, all 9"

Fabric Requirements:	
#2677-50 handkerchief print 1 1/3 yds (1.2m) or 4 full rows of blocks	<input type="checkbox"/> Cut out 10 blocks, trimming 1/4" beyond outer edge of each block
#2678-22 pink pinstripe & #2685-41 blue diamond 3/8 yd (.6m) each	<input type="checkbox"/> Cut 2 strips 9 1/2" x width of fabric (WOF); cut into five 9 1/2" blocks
#2678-50 blue pinstripe 1 yd (.9m)	<input type="checkbox"/> Cut 3 strips 9 1/2" x WOF; cut into ten 9 1/2" squares (for butterfly blocks)
#2682-61 roses on pink 1 yd (.9m)	<input type="checkbox"/> Cut 6 strips 5 1/4" x WOF; join end-to-end in 3's, and cut 2 strips 47 1/2" & 2 strips 48". Reserve scraps for Dresden circle appliqués.
#2685-50 yellow diamond 3/8 yd (.4m)	<input type="checkbox"/> Cut 5 strips 1 1/2" x WOF; join end-to-end and cut 2 strips 36 1/2" and 2 strips 47 1/2" (inner border). <input type="checkbox"/> Reserve balance for Dresden plate appliqués.
#2684-61 blue ticking stripe 5/8 yd (.5m)	<input type="checkbox"/> Using Dresden template, trace and cut out 10 templates following instructions below. Cut balance into 2 1/4" wide bias strips; join end-to-end, press in half lengthwise and reserve for binding.
fat 1/8 each of #2679-61 red rose/blue flowers, #2681-61 wavy stripe, #2683-61 roses on cream, #2684-22 pink pinstripe, #2680-61 daisies on blue, & #2683-50 roses on yellow	<input type="checkbox"/> Reserve for Dresden plate appliqués
#313-94 black texture fat 1/8 or 1/8 yd (.1m)	
8" x 10" piece of freezer paper	Scrap of heavy cardboard
Backing: 2 1/2 yds (2.3m) (I used #2681-61)	<input type="checkbox"/> Cut 1 piece 66". Cut balance into 3 equal widths; join and-to-end and sew to side of 66" piece.
Batting: a piece 52" x 61"	Suggested thread for quilting: King Tut #916 by Superior Threads

Appliqués:

Dresden Plates: (Make 5 each of pink on blue diamond ground, and yellow/blue on pink pinstripe ground.)

- Trace Dresden template, including seamline, onto cardboard and cut out. Trace and cut out 10 pieces of each of the 8 fabrics as listed above. Remove seam allowance from large curved edge of template. Lay cardboard template on wrong side of each fabric piece, and press under curved edge around cardboard. (I find that a little spray starch on the seam allowance is helpful.)
- Using photo as a guide for fabric selection, sew Dresden pieces together along straight edges. Note that each plate uses 2 each of 4 different fabrics. Make 10 plates in total.
- Trace Dresden circle template onto cardboard and cut out. Trace and cut out 10 circles from the roses on pink fabric, centering a rose in each circle. Trim seam allowance from cardboard template. Lay template on wrong side of each fabric circle and press under along cardboard edge.
- Center a pink pieced Dresden plate on each 9 1/2" blue diamond square. Pin a flower circle in the center. Appliqué edges of Dresden plate and circle using a blanket stitch and decorative thread.
- Repeat with the remaining Dresden plates and the 9 1/2" pink pinstripe squares.

Butterfly Blocks:

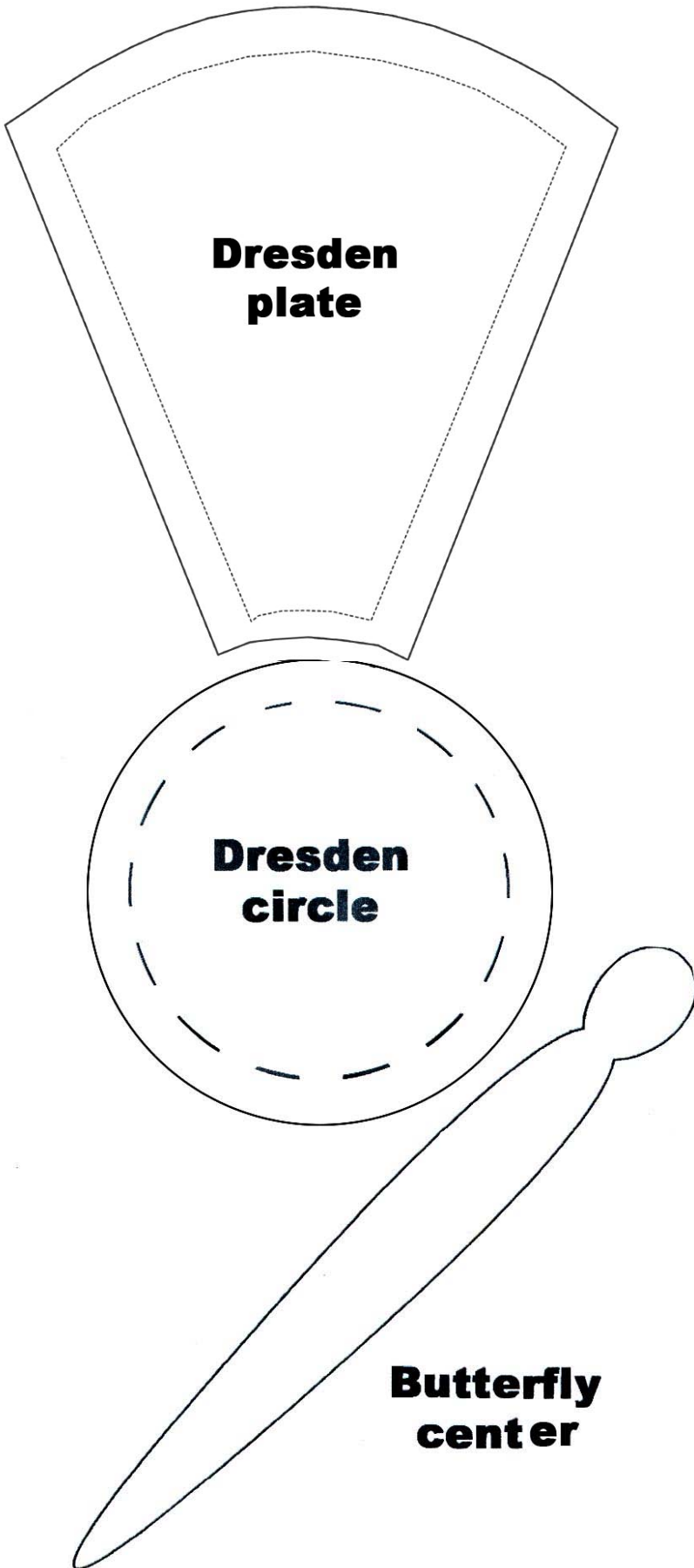
- Press under 1/4" on each handkerchief. To gather the handkerchief, run a large basting stitch vertically down center of square, and horizontally 1" below center. Pull up gathering threads.
- Center each handkerchief on a 9 1/2" blue pinstripe square, arranging edges to form a butterfly shape. Handkerchief will be very puffy. Pin in place.
- Appliqué edges using a blanket stitch and decorative thread.
- Trace 10 butterfly bodies onto freezer paper. Press on wrong side of black fabric, leaving 1/2" between bodies. Cut out 1/4" beyond edge of paper.
- Press under edges along edge of paper. Pin onto handkerchief, centering along vertical gathers. Appliqué in place, removing paper before all edges are stitched down.

Assembly:

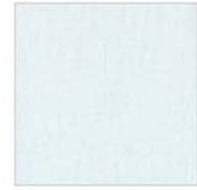
- Using photo as a guide, arrange Dresden plate and butterfly blocks alternately in 5 rows of 4. Sew into rows, then sew the rows together.
- Sew the 36 1/2" yellow strips to top & bottom edges.
- Sew the 47 1/2" floral strips to the 47 1/2" yellow strips, and sew the yellow strips to sides of quilt.
- Sew the 48" floral strips to top & bottom edges. Press all seams toward outer borders.

Finishing:

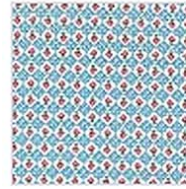
Layer the prepared backing, batting and quilt top. Baste and quilt as desired. I stitched in the ditch along the Dresden sections and around butterfly bodies, and stipple quilted the background of the blocks. Trim edges even with quilt top. Sew the prepared blue stripe bias binding to the edges, turn and stitch in place. Label and enjoy your new quilt!



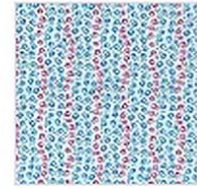
2678-22.jpg



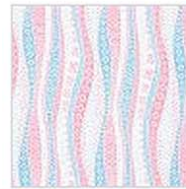
2678-50.jpg



2679-61.jpg



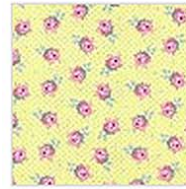
2680-61.jpg



2681-61.jpg



2682-61.jpg



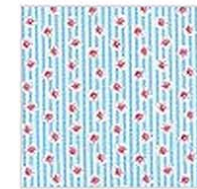
2683-50.jpg



2683-61.jpg



2684-22.jpg



2684-61.jpg



2685-22.jpg



2685-41.boo



2685-50.jpg

Print 100% of size (i.e. Do not use page scaling) !!